

# TECHNICAL DATA SHEET • SPECIFICATIONS

## FIRE-RATED INSULATED ACCESS DOOR WITH DRYWALL BEAD FLANGE

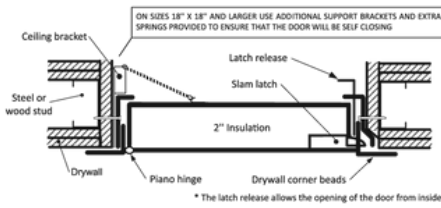
Self-latching tool-key operated slam latch, piano hinge

PFI-GYP

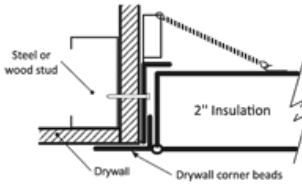
### INSTALLATION

Technical drawing PFI-GYP

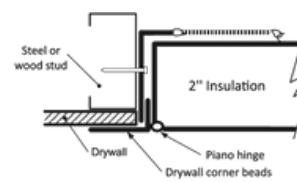
#### RECOMMENDED CEILING INSTALLATION PROCEDURE FOR 3 HOUR RATING



#### RECOMMENDED CEILING INSTALLATION PROCEDURE FOR 1 HOUR RATING



#### RECOMMENDED WALL INSTALLATION PROCEDURE FOR 1 HOUR RATING



Authorities Having Jurisdiction (AHJ) should be consulted in all cases as to the particular requirements that apply to the installation and use of fire-rated access doors.

### STANDARD DIMENSIONS AND APPEARANCE

Dimensions • W X H		Number of locks	Weight	
inches	mm		lbs	KG
8 x 8	203 x 203	1	6.4	3.0
12 x 12	304 x 304	1	10.6	5.0
16 x 16	406 x 406	1	15.4	7.1
18 x 18	457 x 457	1	18.2	8.5
22 x 22	558 x 558	1	24.8	11.5
22 x 30	558 x 762	1	31.2	14.5
22 x 36	558 x 914	2	37.4	17.3
24 x 24	609 x 609	1	28.0	13.0
24 x 36	609 x 914	2	39.8	18.1
*24 x 48	609 x 1219	2	49.3	22.4
*30 x 30	762 x 762	1	39.7	18.0
*32 x 32	812 x 812	2	44.6	20.2
*36 x 36	914 x 914	2	53.5	24.3
*48 x 48	1219 x 1219	2	83.4	37.8

Your odd sizes: Made in 5 days

Rough wall opening is door size + 1/4" or + 6 mm

#### For installation in vertical wall assemblies:

Certified to standards: UBC 7-2 (1997), UL 10B (1997), UL 10B (2009), NFPA 252 (2003), NFPA 252 (2008), NFPA 252 (2012), CAN/ULC S104 (R1985), CAN/ULC S104 (2010). Rating achieved: 3 hours, neutral/negative pressure.

Maximum size: 48" wide x 48" high (1219 mm x 1219 mm). Maximum area of 2304 in<sup>2</sup>. Tolerance on height and width limitation is ± 3" (76 mm) as long as the area does not exceed 2304 in<sup>2</sup>.

Temperature rise: 250°F (121°C) after 30 min. 450°F (232°C) after 60 min.

#### For installation in horizontal ceiling assemblies:

Certified to standards: ASTM E119 (2012), CAN/ULC S101 (2007).

Rating achieved: 3 hours in non-combustible construction. 1 hour in combustible construction.

Maximum size: 24" x 36" (hinges & latch on 36" long sides) (610 mm x 914 mm). Tolerances on dimension limitations are ± 3" (76 mm) as long as the area does not exceed 864 in<sup>2</sup>.

Temperature rise: not applicable.

### DESCRIPTION AND MATERIAL SPECIFICATION

Material	20-gauge galvalume steel door and 16-gauge cold rolled steel frame
Hinge	Continuous piano hinge, located in the second dimension (height)
Lock / Latch	Self-latching tool-key operated slam latch and/or ring operated slam latch, both included
Finish	High quality white powder coat primer
Packaging	Individually wrapped, 1 door per box
Inside panel release	Mechanism allowing panels to open from inside, standard on all doors over 12" x 12"
Flange	22-gauge galvanized steel, 1 1/4" drywall bead flange
Frame	2 1/2" in depth, made of cold rolled steel
Insulation	2" thick fire rated mineral wool

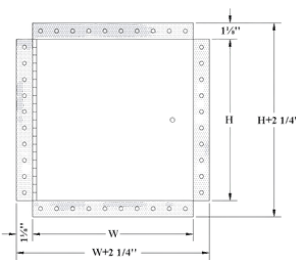
#### POPULAR OPTIONS

For complete list of options go to [cendrex.com](http://cendrex.com)

Lock / Latch	Key-operated cylinder cam latch (-10), mortise slam latch (-85, cylinder optional)
Handle	4" handle-operated slam latch (-22)
Material	Stainless Steel (SS)

#### OTHER TECHNICAL INFORMATION

\*Not available for ceiling rating (maximum 24" x 36")



### PROJET DATA

Project:	Date:	QTY	W	H
Architect:				
Dealer:				
Contractor:				
Location:				

Tagging instructions:

Special instructions:

Options:

Submittal approval:  
(Signature or stamp)

HEAD OFFICE  
6500 Henri-Bourassa E. Blvd  
Montreal QC H1G 5W9

**cendrex**  
Made in Canada

Last updated: December 28, 2023

514-493-1489 | 1-800-479-1489  
[info@cendrex.com](mailto:info@cendrex.com) | [cendrex.com](http://cendrex.com)

## OPTIONS

This comprehensive list includes all available options. Please consult our catalog or contact our customer service to verify the feasibility of your chosen combination.

### LOW SECURITY LOCKING MECHANISM



- ☐ **35**  
Screwdriver operated  
cam latch



- ☐ **220**  
Screwdriver operated  
cylinder Cam latch



- ☐ **80**  
Ring/tool key operated slam  
latch



- ☐ **55**  
Hex head slam latch and ring key  
operated slam latch



- ☐ **30**  
Slide latch



- ☐ **50**  
Allen hex head cam latch

### HANDLES



- ☐ **25**  
WITH KEY - 4" handle and key  
operated cam latch



- ☐ **100K**  
Key-operated recessed handle  
cam latch with cap over key  
path



- ☐ **20**  
WITHOUT KEY - 4" handle  
operated cam latch



- ☐ **22**  
WITHOUT KEY - 4" handle  
operated slam latch



- ☐ **21**  
WITHOUT KEY  
Fixed 4" handle



- ☐ **26**  
WITHOUT KEY - L handle

### MEDIUM SECURITY LOCKING MECHANISM



- ☐ **10**  
Key-operated cylinder  
cam latch



- ☐ **15**  
Mortise cam latch preparation  
**15C**  
Mortise cam latch preparation,  
keyed differently  
**15CKA**  
Mortise cam latch preparation,  
keyed alike



- ☐ **85**  
Mortise slam latch



- ☐ **85C**  
Mortise slam latch with cylinder  
**85CKA**  
Mortise slam latch cylinder  
keyed alike



- ☐ **90**  
Pinned hex head cam latch



- ☐ **C**  
Cylinder cam latch,  
keyed differently



- ☐ **CKA**  
Cylinder cam latch,  
keyed alike

### MATERIALS



- ☐ **GS**  
Galvanneal steel



- ☐ **AL**  
Aluminum



- ☐ **SS**  
Stainless steel



- ☐ **CR**  
Cold rolled steel

### HIGH SECURITY LOCKING MECHANISM



- ☐ **40**  
Mortise deadbolt lock



- ☐ **40C**  
Mortise Deadbolt Lock with  
Cylinder, keyed differently



- ☐ **40CKA**  
Mortise deadbolt lock with  
cylinder, keyed alike



- ☐ **99**  
Inside release thumbturn for  
mortise deadbolt lock



- ☐ **45**  
Mortise preparation for  
detention deadbolt lock



- ☐ **46**  
Detention deadbolt lock



- ☐ **47**  
CIDetention deadbolt Key

### OTHERS



- ☐ **60**  
Gasket



- ☐ **160**  
Holding cable



- ☐ **240**  
Masonry anchors