

Elegance

collection

The most beautiful
things are invisible
to the eye

CONCEALED ACCESS DOORS



GFRG

CEILING [GFRG-PUR]

CONTOUR

WALL OR CEILING [CTR-MAG]



FEATURES

Rounded corners for an aesthetically pleasing interior and smooth finish.

Gypsum-based material blends in perfectly with drywall surface once painted.

Gravity-based panel closure ideal for drywall ceiling applications.

Available with square corners or hinges for wall surfaces.

Slightly bevelled panel that closes over the flange for modern appearance.

Durable steel construction for walls or ceilings of any material.

Clean look thanks to hidden magnetic closing mechanism and concealed double-arm hinges.

White textured powder coat for a drywall look and feel when painted.

MATERIALS

Lightweight glass fiber reinforced gypsum.

16 gauge cold rolled steel frame and door with high quality white powder coat finish.

HINGE

Gravity based closure, removable door.

Concealed double arm pantograph system.

LOCKING MECHANISM

None.

Concealed magnets.

OPTIONS

Square corners, hinges, cylinder or screwdriver latch, gasketing.

Cylinder or screwdriver latch, mortise latches, retaining cables, gasketing, galvanized steel.

INSTALLATION PROCESS

Frame the opening · Fasten door to frame · Mud and tape flange · Prime, paint flange and door.

Frame the opening · Fasten door to frame · Paint (optional).

COST COMPARAISON

Installation Cost ■■■■□

Installation Cost ■■□□□

Product Cost ■■■□□

Product Cost ■□□□□

ODD SIZES AVAILABLE

Non-stock doors manufactured in 15 business days.

Odd-size doors manufactured in 5 business days.

DOOR SIZE W X H

Ceiling:
9" X 9" - 12" X 12" - 16" X 16" - 18" X 18" - 24" X 24"

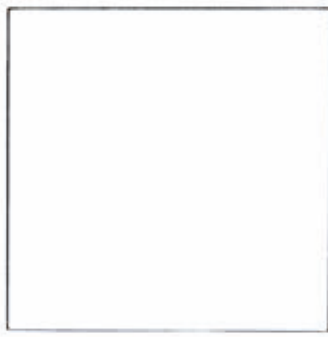
Wall and Ceiling:
8¼" X 8¼" - 8¼" X 12" - 10" X 10" - 12" X 12" - 12" X 18" - 14" X 14" - 16" X 16" - 18" X 18" - 18" X 24" - 20" X 20" - 22" X 22" - 22" X 30" - 22" X 36" - 24" X 24" - 24" X 30" - 24" X 36"

Ceiling Only: 24" X 48" - 36" X 36"

ROUGH OPENING

Door size + 6"

Door size + ¼"

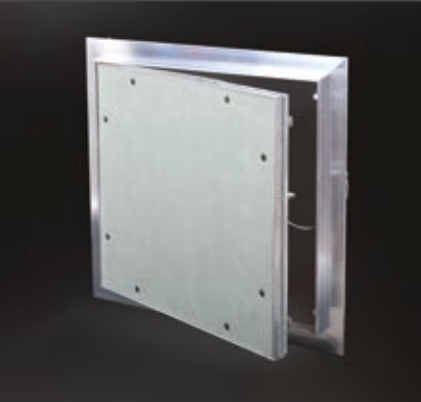


ALUMI

WALL OR CEILING (RAL)

EDG

WALL OR CEILING (EDG-GYP)



Removable door with 1/2" or 5/8" drywall insert to blend in perfectly with walls or ceilings.

Solidly built extruded aluminum frame and door.

Nearly invisible 1/16" gap around door and frame.

Gasket door perimeter adds resistance to air and smoke infiltration.

Available in double doors for very large openings.

Removable concealed hinges and push-to-close latch for an elegant yet economical solution.

Durable steel construction for walls or ceilings made of drywall.

White textured powder coat for a drywall look and feel when painted.

Available in double doors for very large openings.

Extruded mill finish aluminum frame and door contour with moisture resistant drywall insert.

Concealed free pivot hinge, retaining cables, removable door

Concealed push latches.

Cylinder or screwdriver latch, double doors, factory pre-finished door.

Fasten frame to opening · Mud door and flange · Prime, paint flange and door.

Installation Cost ■■■■□

Product Cost ■■■■□

Odd-size doors manufactured in 5 business days.

Wall and Ceiling

8" X 8" - 12" X 12" - 16" X 16" - 18" X 18" - 20" X 20" - 24" X 24" - 36" X 36" - 24" X 48"

Available for 1/2" and 5/8" drywall

Door size + 3/8"

16 gauge cold rolled steel door and frame with corner bead flange with high quality white powder coat finish.

Concealed spring and pin type hinge, removable door, retaining cables for doors > 12" X 12".

Concealed push latches.

Cylinder latch, mortise latch, double doors, retaining cables, galvanized steel, stainless steel #304 #4.

Frame the opening · Fasten door to frame · Mud and tape flange · Prime frame, paint frame and door.

Installation Cost ■■■■□

Product Cost ■■■■□

Odd-size doors manufactured in 5 business days.

Wall and Ceiling:

6" X 6" - 8" X 8" - 8" X 12" - 10" X 10" - 12" X 12" - 12" X 16" - 12" X 18" - 12" X 24" - 14" X 14" - 16" X 16" - 18" X 18" - 18" X 24" - 20" X 20" - 22" X 22" - 22" X 30" - 22" X 36" - 24" X 24"

Door size + 1/4"

The Cendrex Advantage

Superior design for concealed appearance

Reengineered access doors made to save installation costs

Odd size doors manufactured in 5 business days

Custom doors manufactured in 10 business days

98% fulfillment and on-time delivery

LEED ready

Since 1985, Cendrex has been designing and manufacturing high-quality standard and non-standard access doors, roof hatches, floor hatches and cabinets. Cendrex's products are available locally throughout North America, due to an extensive distribution network of major construction material distributors and strategically located warehouses.
